

## Why GKB Board?

- Length and thickness manufactured according to customer demand.
- Product according to DIN 18180.
- Economic Price.
- Manufactured only from the finest Gypsum



# Gypsum Boards Factory

Gypsum has been used as a building material since the Egyptians erected the pyramids. Today, gypsum products continue to provide safety and value in construction.

Gypsum Board (also know as drywall, plasterboard, or wallboard) is manufactured using panels made of gypsum plaster pressed between two thick sheets of paper, which are then oven-dried. Gypsum board is used globally for the finish construction of interior walls and ceilings. It is economical, light, and easy to install. The product can be manufactured to withstand heat and/or moisture. Gypsum board is also eco-friendly, providing heat-insulation and energy-savings.



## Highlight about the Factory



## Product

Gypsum boards are produced to suit different usages; residential and commercial construction for interior walls and ceilings, exterior sheathing, fire resistant partitions and membranes, and liner material for elevator shafts and stairwells.

### GKB Regular Board

For internal use only: ceiling, under roofing, wall lining, partitioning (metal stud partitions).



Type	Thickness (mm)	Width (mm)	Length (mm)	Edges
GKB Regular	(9.5, 12.5, 15, 18)	1200	2400 - 3000	 Squared  Tapered

### GKB1 Water Resistant Board

For use in wet areas, bathrooms, kitchens, under roof insulation systems and external applications. This board is made moisture resistant, all the way through green paperliner and core backed with a vapour control membrane.



Type	Thickness (mm)	Width (mm)	Length (mm)	Edges
GKB1 Water Resistant	(9.5, 12.5, 15, 18)	1200	2400 - 3000	 Squared  Tapered

## GKF Fire Resistant Board

For works requiring high fire resistance. This system can with stand fire for 1 to 2 hours according to the German standards. It is a board reinforced with glass fibre and vermiculite to increase fire resistance, and encased in a pink finished paperliner on the face side.



Type	Thickness (mm)	Width (mm)	Length (mm)	Edges
GKF Fire Resistant	(9.5, 12.5, 15, 18)	1200	2400 - 3000	 Squared  Tapered

## GKF1 Water & Fire Resistant Board

This board is resistant to both water and heat, allowing a wide variety of applications.



Type	Thickness (mm)	Width (mm)	Length (mm)	Edges
GKF1 Water & Fire Resistant	(9.5, 12.5, 15, 18)	1200	2400 - 3000	 Squared  Tapered

# Standard Specifications of Gypsum Plaster Board According to DIN 18180

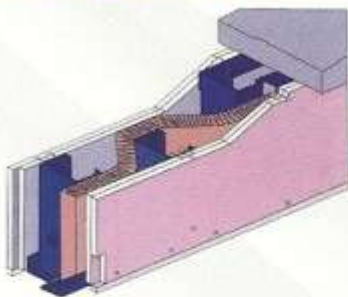
## 1- Dimensions and mass per unit area

Thickness in (mm)		Standard width (mm)	Standard length (mm)	Mass per unit area in kg/m <sup>2</sup>			
Normal size	Limit deviation			GKB	GKB1	GKF	GKF1
9.5	±0.5	1200	2400 to 3000	≤9.5	≤9.5	8 to 10	8 to 10
12.5	±0.5			≤12.5	≤12.5	10 to 13	10 to 13
15	±0.5			≤15	≤15	13 to 16	13 to 16

## 2- Breaking Load

Thickness in (mm)	Breaking load across fiber of surfacing (N)	Breaking load parallel to fiber of surfacing (N)
9.5	≥450	≥150
12.5	≥610	≥210
15	≥610	≥210
18	≥610	≥210

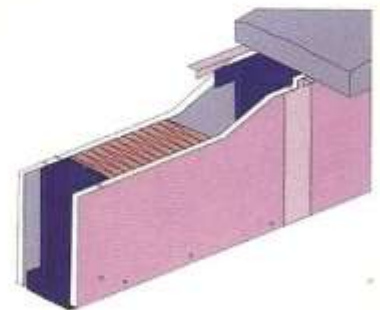
## Light steel frame Gypsum Board partition



- This type of partition is formed by 4 layers of plasterboard, which is installed on the frame.
- The insulating layer and sunken cord can also be fixed
- Used in hospital, school, factory
- Provides insulation
- Sound-proof and fire-proof

## Light steel frame and Gypsum Board partition

- Used in construction and rebuilding projects
- Standard partition for home, office and hotel
- Function: sound insulation, heat preservation, quake-proof and fire-proof



## Advantages of Gypsum Boards

- Low finishing costs
- Allows building structures to be made of less massive materials, (e.g. the wall thickness will be 9cm instead of around 20cm)
- 80% lighter than alternative systems
- Easy to handle, install, and repair
- Multiple layers of varied board thickness reduce sound transmission and humidity
- Requires no cure time
- Allows construction to proceed uninterrupted



## PVC Laminated Gypsum Tiles

PVC & Aluminum gypsum tile is a new kind of ceiling material, which improved and produced by ourselves. The tiles are designed as one kind of interior ceiling, especially for the hot environment. The tiles have been approved as "new national building material". They are covered with various pattern of PVC on the face and aluminum foil on the back, which can prevent from dew and moisture. The tiles also can insulate the heat even under the high temperature. They are widely used in hotel, hospital, school, apartment and many other public areas.

### Advantages of PVC Gypsum Tile's

- To be covered by decorative vinyl already, no need for further decoration
- Easy clean
- Good light reflection
- Applied with metalized foil can increase the thermal insulation ability
- Many kinds of designs, easy to choose



### Technical Specifications

Base Material		Top quality Gypsum board ceiling tile with best aluminum foil backing
Specification (mm)	Length x width	595 X 595, 595 X 1195, 600 X 600, 603 X 603, 605 X 605, 603 X 1212, 610 X 1220 (2" X 4")
	thickness	7.5, 8.5, 9.0, 9.5, 12, 12.5
Specifications Tolerance		Length $\leq \pm 1.0\text{mm}$ - Width $\leq \pm 1.0\text{mm}$ - Thickness $\leq \pm 0.5\text{mm}$
Packing		6/8/10 Pieces per carton with shrink wrap
Max loaded details		704/1350/1400 cartons, 3239.40-4032 Square meters, 23.5 tons, loaded in one 20 FCL
Technical Data		Weight / sqm : 7.5 mm / 5.7 Kgs, 8.0 mm / 5.9 Kgs, 8.5 mm / 6.2 Kgs, 9.0 mm / 6.8 Kgs, 9.5 mm / 7.1 Kgs, 12 mm / 9.2 Kgs, 12.5 mm / 9.5 Kgs
Fire resistant property		No flammable B1 in accordance with DN 18-180
Lengthways & Lateral ruptures Load		7.0 mm < 110N, 8.0 mm < 120N, 9.0 mm < 140N
Installation		Match with Top quality T-32/38 grids with 0.30-0.45 mm thickness



# T-bar Ceiling Suspension Grids

Usual Dosage for per square meter ceiling tiles			
Name	Dosage (pcs/m <sup>2</sup> )	Dosage (pcs/m <sup>2</sup> )	Usual Size
Main Runner	0.225	3.6	38 / 32X24X0.4X3600/3660 mm
Cross Tee	1.35	1.2	26X24X0.4X1200/1220 mm
Cross Tee	1.35	0.6	26X24X0.4X600/610 mm
Wall Angle	0.2	3.0	22X22X0.4X3000/3050 mm

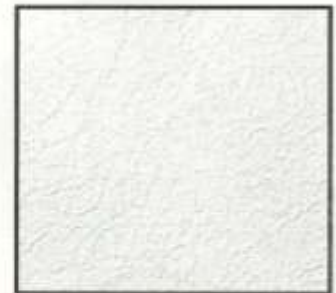
# Sample Patterns of Gypsum Tiles



Design No. 154



Design No. 238



Design No. 246



Design No. 252



Design No. 262



Design No. 567



Design No. 568



Design No. 996



Design No. 997